



# MULTILAYER

Cooler. Fresher. Faster.

## Commercial Refrigeration Solutions





# Efficiency unlocked



## Eco-friendly cooling

Using R290 natural refrigerant, a highly sustainable solution that enhances energy efficiency while reducing environmental impact.



## Lower energy costs

Variable speed compressors that adjust to demand, avoiding peak loads and substantially reducing running costs.



## Optimised performance

Semi-automatic defrost prevents excessive ice build-up, improving efficiency and minimising maintenance effort.



## Future ready innovation

All our systems are designed with next-generation cooling technology to support sustainability, cost-effectiveness and long-term reliability.



### Head Office:

The Olive Grove Industrial Park, Ou Paardevlei Rd,  
The Interchange, Somerset West, Cape Town,  
7130

### Contact:

+27 (0) 21 – 851-9616, [sales@aht africa.co.za](mailto:sales@aht africa.co.za)





# Table of Contents

## 01 INTRODUCTION

About Us	04
End-to-end solutions	05
Product categories	06

---

## 02 FROZEN

Island Freezers	08
Upright Freezers	16

---

## 03 FRESH

Multidecks	21
Semi Verticals	28
Counters	34

---

## 04 HOT FOODS

Counters	42
Rotisseries	46

---

## 05 PROMOTION

Plug-ins	50
----------	----

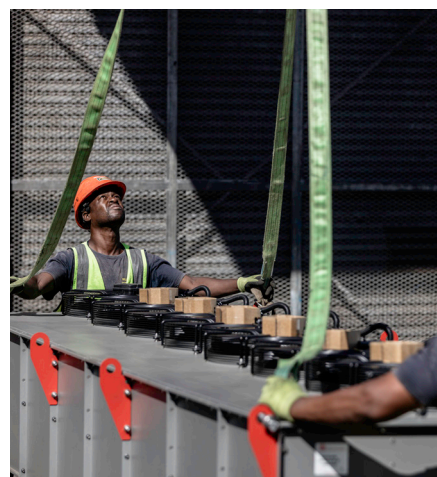


Multilayer leads Africa in energy efficient, low-maintenance refrigeration to keep your products at their best.

From expert design and seamless installation to ongoing maintenance and support, we deliver advanced technology and exceptional service to help you save more.

Our refrigeration systems are built to last up to five times longer than the industry standard, providing peace of mind and reliability.

Today, the business remains proudly family-run, with over 40,000 units in operation across Africa. We were the first to introduce natural gas freezers at scale in South Africa, helping shift the industry toward smarter, more sustainable solutions.







# End-to-End Solutions

Everything you need to keep your refrigeration systems running at their best. Our comprehensive process is designed to support you at every stage. You also have the flexibility to choose only the services that you need.



## Benefit from



### In-house Installation & Service

Covering the whole turnkey process



### Extended Warranties

Long-lasting quality with 5X the industry warranty



### Spare Parts Holding

Minimising downtime and maximising efficiency



### Extensive Stock Holding

Fast lead times with dedicated stock holding



### Natural Gas Systems

Most significant footprint of natural gas refrigeration supply in Africa



### Best in Class Technology

Reducing maintenance and delivering a high return on investment



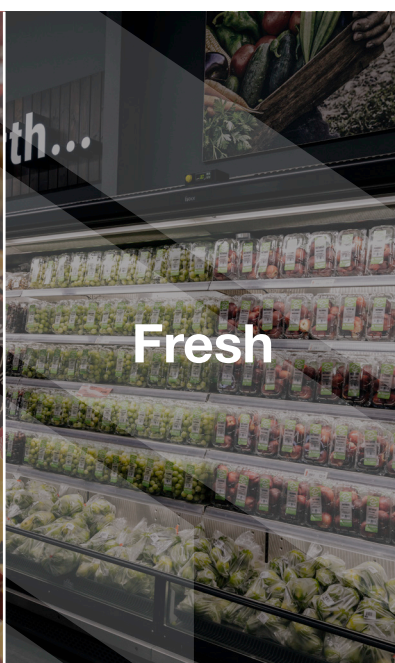
# Product Categories

Our product range is designed to deliver performance, reliability and efficiency across every application. Whether you're looking to freeze, chill, heat or promote, we offer a wide selection of high-quality, low-maintenance refrigeration systems built to last.

With flexible configurations and trusted technology, there's a solution to match every customer need and environment. Connect with us to find the right fit for your business.



Frozen



Fresh



Hot



Promotion

## Our products have helped reduce South Africa's carbon footprint with R290

Over 10 years, natural-gas refrigeration has helped reduce CO<sub>2</sub> emissions by 161 783 tons.



Equivalent to 4,600 medium-sized cars, each driving 200,000 km



Delivering up to 50% lower energy use than HFC-based systems



Generating only 6t CO<sub>2</sub> eq compared to 161 783 t for HFC (R404A)



Having a GWP of 0.02 to 3, R290 offers over 99% lower greenhouse-gas impact than HFC alternatives





# Frozen

Sleek and spacious, this range keeps your frozen products at optimal temperatures while enhancing visibility and accessibility. Designed to perform in high-demand retail environments, these freezers combine energy efficiency with eye-catching display to support stronger sales and lower running costs.

## The Range

Islands

Uprights



## Key Features



R290  
refrigerant



Eco-friendly  
cooling



Semi-automatic  
defrost



Variable speed  
compressor





# MULTILAYER

## FROZEN CHICKEN

Two side-by-side close-up images of frozen chicken products in plastic bags. The left image shows a bag of Tyson's Great! Chicken, and the right image shows a bag of Tyson's Chicken Wings. Both bags are partially filled with frozen chicken pieces.

Island  
Freezers



# Paris



Paris is the world's most reliable refrigeration unit. On the market for over 20 years, it is continuously optimised and has the longest service life.

## Standard

- Multiplexible
- Outer skin condenser
- Height and width-adjustable racks

## Options

- End-cabinet attachments on either side
- Extendable with shelf attachments
- Branded exterior wrap or colour finishes
- Range of accessories

## Dimensions

Width (mm)	1457	1854	2102	2502
Depth (mm)	853			
Height (mm)	853			

## Refrigerant

R290

## Connection

Plug-in

## Efficiency

Variable speed  
compressorSemi-auto  
defrost

LED

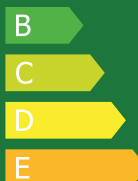
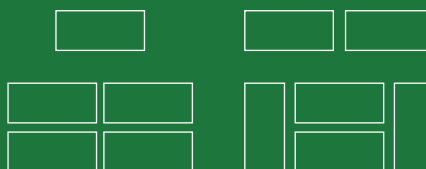
ECO fan

## Temp Range

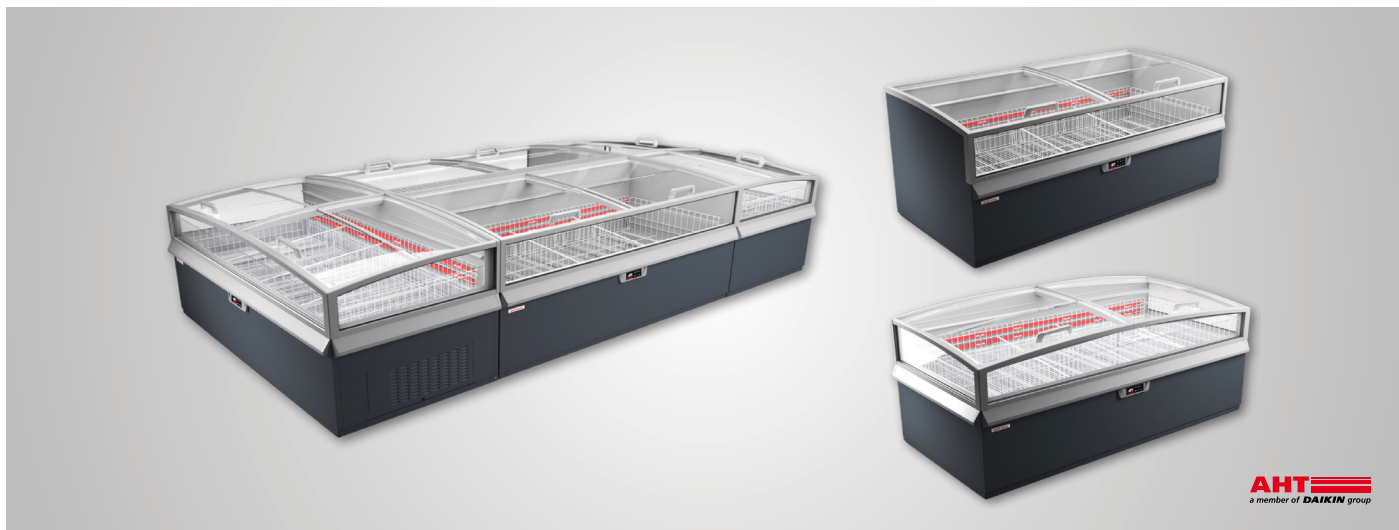
3...15°C

-18...23°C

## Flexibility



# Montreal XL



Elegant design with largest display area, the Montreal XL guarantees perfect product visibility.

## Standard

- Outer skin condenser
- Height and width-adjustable racks
- Protective bumper sticker
- Can be combined with overhanging Kinley XL or X5 units

## Options

- End-cabinet attachments on either side
- Extendable with shelf attachments
- Colours and surfaces adapted to your requirements
- Range of accessories

## Dimensions

<b>Width (mm)</b>	1752	1889	1912	2102	2149	2502
<b>Depth (mm)</b>	1016 / 1027					
<b>Height (mm)</b>	450 / 530					

## Refrigerant

R290

## Connection

Plug-in

## Efficiency

Variable speed  
compressor

Semi-auto  
defrost

LED

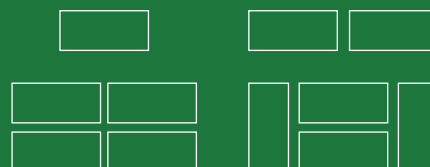
ECO fan

## Temp Range

3...15°C

-18...23°C

## Flexibility

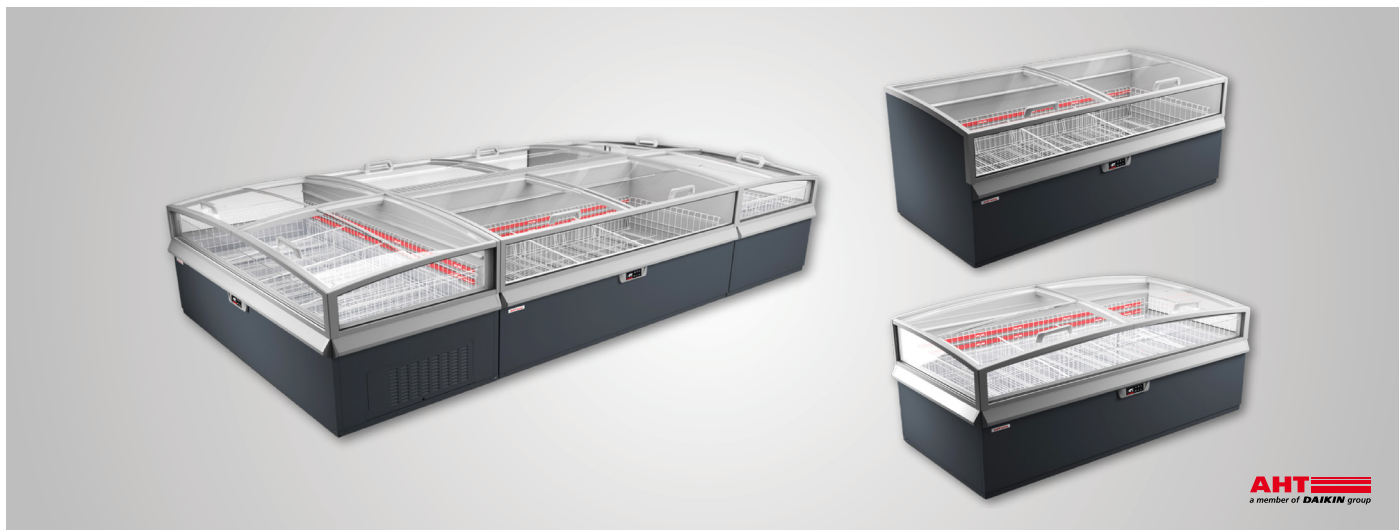


C





# Montreal Slim



This Slim-footprint version of the XL is ideal where aisle space is at a premium.

## Standard

- Outer skin condenser
- Height and width-adjustable racks
- Protective bumper sticker
- Can be combined with overhanging Kinley XL or X5 units

## Options

- End-cabinet attachments on either side
- Extendable with shelf attachments
- Colours and surfaces adapted to your requirements
- Range of accessories

## Dimensions

Width (mm)	1752	1889	2102	2502
Depth (mm)	876 / 1015			
Height (mm)	450 / 530			

## Refrigerant

R290

## Connection

Plug-in

## Efficiency

Variable speed  
compressor

Semi-auto  
defrost

LED

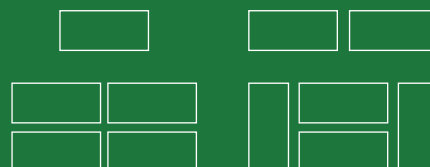
ECO fan

## Temp Range

3...15°C

-18...23°C

## Flexibility



C

# Kigali XL



With the largest Total Display Area of all AHT units and a sleek, linear design, the Kigali XL ensures maximum product visibility and premium aesthetic.

## Standard

- Smooth push-glass lid ensures easy product access
- Row and end units can be combined with Kinley overhead units
- Increased ground clearance
- Visibility on three sides in the Endcap version

## Options

- End-cabinet attachments on either side
- Extendable with shelf attachments
- Colours and surfaces adapted to your requirements
- Range of accessories

## Dimensions

Width (mm)	1752	2102	2502	2130
Depth (mm)	1008			
Height (mm)	913			

## Refrigerant

R290

## Connection

Plug-in

## Efficiency

Air circulation  
systemSemi-auto  
defrost

LED

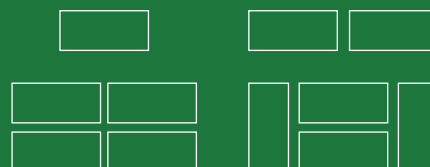
ECO fan

## Temp Range

+5°C

-18...23°C

## Flexibility



C





# Manhattan



**AHT**  
a member of **DAIKIN** group

The sliding cover system of the Manhattan is impressively easy to use and is divided lengthwise, allowing products to be accessed from both sides.

## Standard

- Products can be removed from both sides
- Height and width-adjustable racks
- Outer skin condensers
- Manhattan 210 provides a net volume of 814 litres

## Options

- Customised branding
- Range of accessories

## Dimensions

<b>Width (mm)</b>	1752	1889	2102	2502
<b>Depth (mm)</b>	876 / 1015			
<b>Height (mm)</b>	450 / 530			

## Refrigerant

R290

## Connection

Plug-in

## Efficiency

Variable speed  
compressor

Semi-auto  
defrost

LED

e-Comomized  
technology

## Temp Range

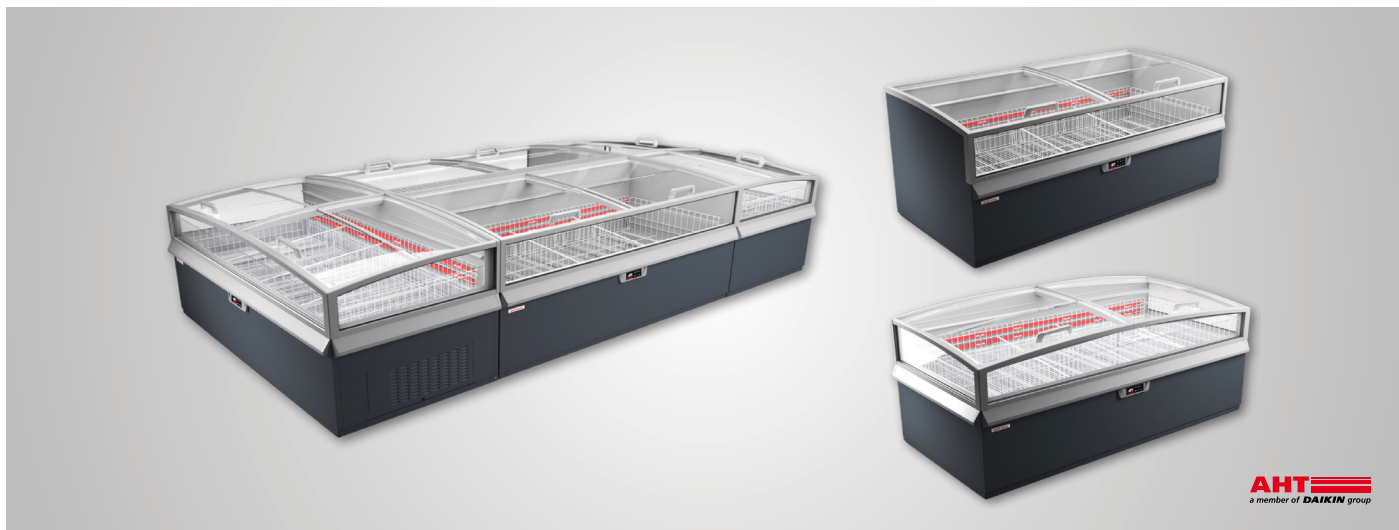
3...15°C

-18...23°C

## Flexibility



# Athen XL



Athen XL is the world's most energy efficient and economical refrigeration unit, offering plenty storage space for your products.

## Standard

- Volume of up to 1071 litres
- Outer skin condenser
- Height and width-adjustable racks
- Lowest power consumption and total cost of ownership

## Options

- End-cabinet attachments on either side
- Extendable with shelf attachments
- Colours and surfaces adapted to your requirements
- Range of accessories

## Dimensions

Width (mm)	1752	2080	2102	2502
Depth (mm)	994			
Height (mm)	910			

## Refrigerant

R290

## Connection

Plug-in

## Efficiency

Variable speed  
compressor

Semi-auto  
defrost

LED

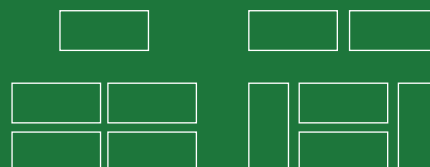
e-Conomized  
technology

## Temp Range

3...15°C

-18...23°C

## Flexibility



B

C

D

E



# Macao



**AHT**  
a member of **DAIKIN** group

Macao is the optimum refrigerator and freezer island and its four glass side panels ensure perfect product visibility.

## Standard

- Mist-free glass
- Pedestal giving easy access from all four sides
- Completely encased, lockable sliding glass cover
- One-piece frame, making it extremely robust
- 100% UV-resistant

## Options

- Customised branding
- Range of accessories

## Dimensions

<b>Width (mm)</b>	999	1455	2100
<b>Depth (mm)</b>	850		
<b>Height (mm)</b>	925		

## Refrigerant

R290

## Connection

Plug-in

## Efficiency

Variable speed  
compressor

Semi-auto  
defrost

LED

e-Conomized  
technology

## Temp Range

3...15°C

-18...23°C

## Flexibility







# MULTILAYER

## Upright Freezers

# Kinley XL



**AHT**  
a member of **DAIKIN** group

Kinley XL offers plenty of space in the field of vision of your customers, significantly increasing your sales area.

## Standard

- Integrated condensation evaporation without electric heating
- Height adjustable and option of baskets instead of shelves
- Can be combined with any AHT fridge/freezer
- Use immediately without drains

## Options

- Heated doors for high humidity
- Customised branding
- Range of accessories

## Dimensions

Width (mm)	210	250
Depth (mm)	755	
Height (mm)	2288 / 2314 / 2338 / 2415	

## Refrigerant

R290

## Connection

Plug-in

## Efficiency

Variable speed  
compressor

Semi-auto  
defrost

LED

e-Conomized  
technology

## Temp Range

-18...23°C

B

C

D

# Kinley X5



The Kinley X5 has the largest display area on the market and is the most energy efficient appliance in its class.

## Standard

- Integrated condensation evaporation without electric heating
- Height adjustable and can be set up as an island
- Can be combined with any AHT fridge/freezer
- Optional configuration with double-sided head unit
- Compared to XL, the X5 capacity is 61 litres higher

## Options

- Heated doors for high humidity
- Customised branding
- Range of accessories

## Dimensions

Width (mm)	210	250	End Case
Depth (mm)	755		
Height (mm)	2288 / 2314 / 2338 / 2415		

## Refrigerant

R290

## Connection

Plug-in

## Efficiency

Variable speed  
compressor

Semi-auto  
defrost

LED

Auto  
evaporation

## Temp Range

-18...23°C

B

C

D





NDL



Erida

freor

Upright freezers with large product capacity, offering an outstandingly clear view of the products even from a distance.

### Standard

- Multiplexible
- Triple-glazed doors with ergonomic handles
- Anti-condensation foil to prevent fogging
- Bimetallic / electronic thermometer
- Defrost heater
- Range of colours

### Options

- Door LED lighting
- Stainless steel bumper/protection rails
- Endwall alternatives (panoramic; solid)
- Hot gas defrost

### Dimensions

Width (mm)	800	1560	2340	3120	3900
Depth (mm)	1015				
Height (mm)	2190 / 2390				

### Refrigerant

R290  
R744 CO<sub>2</sub>  
HFC / HFO

### Connection

Plug-in  
Remote  
Hydro loop

### Efficiency

LED

ECO

Continuous  
cooling

### Temp Range

-18...23°C

### Flexibility



NDL

B

Erida

C



# Fresh

Modern and efficient, these open-access units deliver consistent temperatures while minimising energy use. With a wide range of configurations and accessories, they're built to showcase fresh goods beautifully, while preserving quality and extending shelf life through balanced airflow and precision cooling.

## The Range

**Multidecks**

**Semi Verticals**

**Counters**



## Key Features



R290  
refrigerant



Eco-friendly  
cooling



Semi-automatic  
defrost



Variable speed  
compressor





**MULTILAYER**

**Multideck  
Fridges**



# NDL Jupiter



freor

A modern design multideck for attractive product presentation.

## Standard

- Multiplexible
- Four level bumpers
- Wide choice of colours
- Canopy lighting
- Dual air curtains

## Options

- Glass doors or front glass packet
- Enhanced lighting options
- Colour frame
- Night blinds available
- Defrost heater
- Extensive accessories

## Dimensions

Width (mm)	1250	1880	2200	2500	3750
Depth (mm)	850 / 905 / 950 / 1005 / 1050 / 1105 / 1150 / 1205				
Height (mm)	2125 / 2325				

## Refrigerant

R290  
R744 CO<sub>2</sub>  
HFC / HFO

## Connection

Plug-in  
Remote  
Hydro loop

## Efficiency

LED

ECO

Continuous  
cooling

## Temp Range

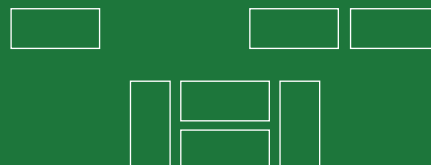
1...  
10°C

1...  
7°C

-1...  
5°C

-1...  
4°C

## Flexibility



B

# Jupiter



freor

This large capacity chiller cabinet provides an excellent presentation for products on display.

## Standard

- Multiplexible
- Plastic bumper
- Canopy lighting
- Wide choice of colours
- Canopy lighting
- Dual air curtains
- Electronic temperature control

## Options

- Enhanced lighting options
- Sliding or hinged doors
- Front glass packet
- Stainless steel bottom protection
- Night blinds available
- Endwall alternatives
- Solid or mirrored inner side panel
- Defrost heater
- Extensive accessories

## Dimensions

<b>Width (mm)</b>	1250	1880	2200	2500	3750
<b>Depth (mm)</b>	850 / 910 / 950 / 1010 / 1050 / 1110 / 1150 / 1210				
<b>Height (mm)</b>	2100 / 2170 / 2300 / 2370				

## Refrigerant

R290  
R744 CO<sub>2</sub>  
HFC / HFO

## Connection

Plug-in  
Remote  
Hydro loop

## Efficiency

LED

ECO

Continuous  
cooling

## Temp Range

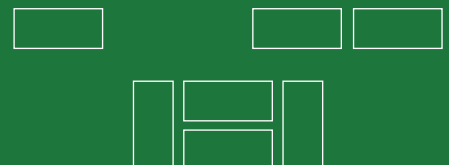
1...  
10°C

1...  
7°C

-1...  
5°C

-1...  
4°C

## Flexibility



B

# RDGA-L4



JBG2

A highly efficient multideck designed for effortless flexibility.

## Standard

- Electronic controller with temperature indicator
- Hot gas defrosting
- 4 rows of suspended shelves | shelves and on air inlet price holders 39 mm
- Zinc-plated steel, powder coated in white (RAL 9003)
- Colour of the base black (RAL 9005)

## Options

- Door | double, straight, High-Vision | hinged
- Sidewalls

## Dimensions

Width (mm)	1250	1600	1875	2500	3750
Depth (mm)	900				
Height (mm)	2035				

## Refrigerant

R290

## Connection

Plug-in

## Efficiency

Auto  
evaporation

LEDit

Natural  
defrost

## Temp Range

0...2°C

A



# RDGA-L5



A streamlined multideck designed for effortless flexibility.

## Standard

- Electronic controller with temperature indicator
- Hot gas defrosting
- 4 rows of suspended shelves | shelves and on air inlet price holders 39 mm
- Zinc-plated steel, powder coated in white (RAL 9003)
- Colour of the base black (RAL 9005)

## Options

- Door | double, straight, High-Vision | hinged
- Door | double, straight | sliding (sideways)
- Sidewalls

## Dimensions

Width (mm)	1000	1250	1600	1875	2500	3750
Depth (mm)	700					
Height (mm)	2055					

## Refrigerant

R290

## Connection

Plug-in

## Efficiency

Auto  
evaporation

LEDit

Natural  
defrost

## Temp Range

0...2°C

B



# RDME-26



A streamlined multideck designed for effortless flexibility.

## Standard

- Electronic controller with temperature indicator
- Hot gas defrosting
- 4 rows of suspended shelves | shelves and on air inlet price holders 39 mm
- Zinc-plated steel, powder coated in white (RAL 9003)
- Colour of the base black (RAL 9005)

## Options

- Door | double, straight, High-Vision | hinged
- Low glass or front glass riser | single, straight | fixed
- Sidewalls

## Dimensions

Width (mm)	938	1250	1875	2500
Depth (mm)	770			
Height (mm)	2035			

## Refrigerant

R290

## Connection

Plug-in

## Efficiency

Auto  
evaporation

LEDit

Natural  
defrost

## Temp Range

0...2°C

2...4°C

B

D



# Vento SPI



**AHT**  
a member of **DAIKIN** group

Vento refrigerated cabinets can be individually adapted to the store design. A wide range of colours allows the best possible integration.

## Standard

- Flexible and connectable shelves
- Wide range of glass door designs
- Piping and flow valve for the cabinet

## Options

- Shelf lighting
- End-cabinet attachments on either side
- Specific installation, per type on request
- Customised branding
- Range of colours and accessories

## Dimensions

<b>Width (mm)</b>	938	2500	3750
<b>Depth (mm)</b>	951 / 1232 / 1262		
<b>Height (mm)</b>	2200 / 2350 / 2400		

## Refrigerant

R290

## Connection

Plug-in

## Efficiency

Waste heat  
recovery

ECO

Hermetically  
sealed cooling  
system

## Temp Range

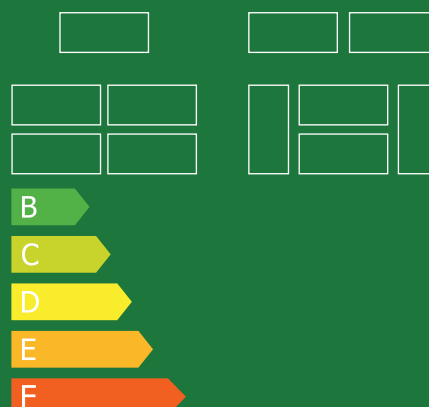
1...  
10°C

-1...  
7°C

-1...  
4°C

-1...  
2°C

## Flexibility







**MULTILAYER**

**Semi Vertical  
Fridges**



# NDL Pluton Space



freor

Elegant food display cabinet, the NDL Pluton Space has a wide and comfortable reach.

## Standard

- Multiplexible
- Four level bumpers
- Panoramic or mirror endwalls
- Wide choice of colours

## Options

- Enhanced lighting options
- Frameless glass doors
- Front glass packet
- Defrost heater
- Extensive accessories

## Dimensions

Width (mm)	1250	1880	2000	2500	3750
Depth (mm)	875 / 920 / 975 / 1020 / 1075 / 1120 / 1175 / 1220				
Height (mm)	1440 / 1570 / 1640 / 1770				

## Refrigerant

R290  
R744 CO<sub>2</sub>  
HFC / HFO

## Connection

Plug-in  
Remote  
Hydro loop

## Efficiency

LED

ECO

Continuous  
cooling

## Temp Range

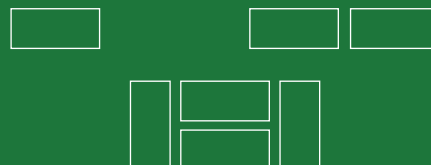
1...  
10°C

-1...  
7°C

-1...  
5°C

-1...  
4°C

## Flexibility



A



# Pluton Space



freor

The Pluton Space provides an outstandingly clear view of the products thanks to its new design frameless bent glass doors, which also feature soft closure.

## Standard

- Multiplexible
- Plastic bumper
- Canopy lighting
- Panoramic endwalls
- Wide choice of colours

## Options

- Enhanced lighting options
- High front option
- Front glass packet
- Back mirror
- Stainless steel bottom protection
- Defrost heater
- Hot gas defrost
- Extensive accessories

## Dimensions

Width (mm)	1250	1880	2000	2500	3750
Depth (mm)	870 / 915 / 970 / 1015 / 1070 / 1170 / 1115 / 1215 / 2100				
Height (mm)	1160 / 1460 / 1570 / 1770 / 1800				

## Refrigerant

R290  
R744 CO<sub>2</sub>  
HFC / HFO

## Connection

Plug-in  
Remote  
Hydro loop

## Efficiency

LED

ECO fan

Continuous  
cooling

## Temp Range

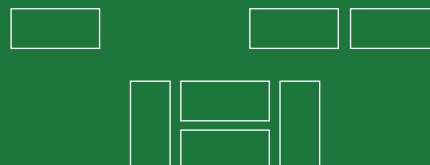
1...  
10°C

-1...  
7°C

-1...  
5°C

-1...  
4°C

## Flexibility



B



# RDAT-20



A compact merchandiser with sleek product presentation.

## Standard

- 3 rows of suspended shelves | shelves and on air inlet price holders 39 mm
- Zinc-plated steel, powder coated in white (RAL 9003)
- Mechanical night blind
- Integrated sidewalls (perspex)
- Open: low glass or front glass riser | single, straight | fixed
- Low glass or front glass riser | single, straight | fixed

## Dimensions

Width (mm)	580	880	1180	1875	2500
Depth (mm)	660				
Height (mm)	1445				

## Refrigerant

R290

## Connection

Plug-in

## Efficiency

Auto  
evaporation

LEDit

Natural  
defrost

## Temp Range

0...2°C

E

# RDAL-N5



Open-front merchandisers that blend upright access with impulse display.

## Standard

- Electronic controller with temperature indicator
- 3 rows of suspended shelves | shelves and on air inlet price holders 39 mm
- Zinc-plated steel, powder coated in white (RAL 9003)
- Mechanical night blind for the open version

## Options

- Door | double, straight | sliding (sideways)
- Low glass or front glass riser | single, straight | fixed
- Sidewalls

## Dimensions

Width (mm)	1250	1875	2500
Depth (mm)	870		
Height (mm)	1550		

## Refrigerant

R290

## Connection

Plug-in

## Efficiency

Auto  
evaporation

LEDit

Natural  
defrost

## Temp Range

0...2°C

## Doors

B

## Open

E

# Oberon S



freor

This medium-height cabinet is an ideal space-saving solution for stores with limited floor space.

## Standard

- Alternate lengths
- Panoramic sidewalls
- Wide choice of colours
- Control panel
- Thermometer (solar-powered or electronic)

## Options

- Enhanced lighting options
- Front glass packet
- Defrost heater

## Dimensions

Width (mm)	940	1250	1880	2500	3750
Depth (mm)	875				
Height (mm)	1595				

## Refrigerant

R290  
R744 CO<sub>2</sub>  
HFC / HFO

## Connection

Plug-in  
Remote  
Hydro loop

## Efficiency

LED

ECO fan

Continuous  
cooling

## Temp Range

0...10°C

-1...7°C

## Flexibility



C

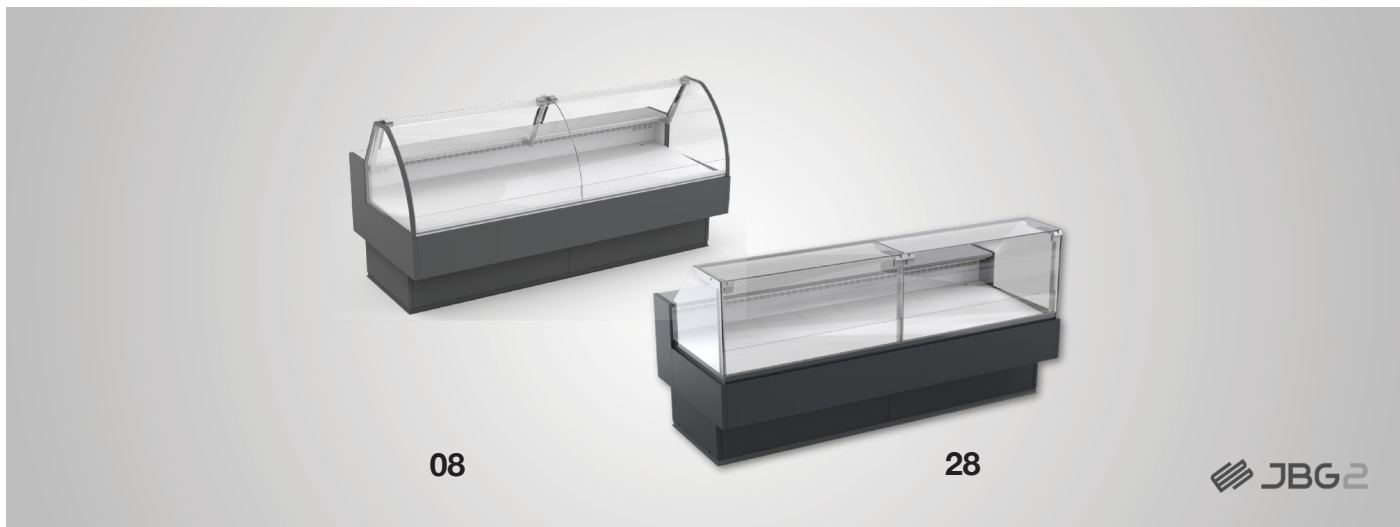




# MULTILAYER

## Counters

# LDGR



The LDGR series delivers low-height, under-counter refrigeration.

## Standard

- Electronic controller with temperature indicator
- Back doors - quantity according to module
- Zinc-plated steel, powder coated in white (RAL 9003)
- Storage: steel coated in grey
- Worktop: linen stainless steel
- Colour of the base black (RAL 9005)
- Perspex covers

## Options

- LEDit lighting
- PVC floor profiles
- Bumper
- Sidewalls
- Glass | single, bent | lift up
- Low glass or front glass riser | single, bent | fixed

## Dimensions

Width (mm)	1250	1875	2500	3750
Depth (mm)	1060			
Height (mm)	1235			

## Refrigerant

R290

## Connection

Plug-in

## Efficiency

Auto  
evaporation

Electrical  
defrost

## Temp Range

0...2°C

# RDEL-05



JBG2

An elegant display counter, featuring a full-view front and top.

## Standard

- Electronic controller with temperature indicator
- 3 suspended glass shelves + bottom made of powder-coated, zinc-coated metal plate
- Shelves support and bottom shelf in grey colour RAL 7004
- Back doors, sliding, double glazed (in corner and 0600 modules hinged door)
- Lighting – top and each shelf – energy-saving, LEDit, WW-2
- Sidewalls integrated with thermopane glass, with silk-screen painting
- Glass | double, bent | tilt

## Dimensions

Width (mm)	600	900	910	1400	1105
Depth (mm)	800				
Height (mm)	1290				

## Refrigerant

R290

## Connection

Plug-in

## Efficiency

Auto  
evaporation

LED

Electrical  
defrost

## Temp Range

2...4°C

C



# RDEL-06



JBG2

A sleek, easy-access unit, offering high-impact product visibility.

## Standard

- Electronic controller with temperature indicator
- 3 suspended glass shelves + bottom made of powder-coated, zinc-coated metal plate
- Shelves support and bottom shelf in grey colour RAL 7004
- Back doors, sliding, double glazed (in corner and 0600 modules hinged door)
- Lighting – top and each shelf – energy-saving, LEDit, WW-2
- Sidewalls integrated with thermopane glass, with silk-screen painting
- Mechanical night blind
- Low glass or front glass riser | single, bent | fixed

## Dimensions

Width (mm)	600	900	910	1400
Depth (mm)	800			
Height (mm)	1290			

## Refrigerant

R290

## Connection

Plug-in

## Efficiency

Auto  
evaporation

LED

Natural  
defrost

## Temp Range

2...4°C

E

# RDEL-21



JBG2

A streamlined display counter that showcases products clearly.

## Standard

- Electronic controller with temperature indicator
- 3 suspended glass shelves + bottom made of powder-coated, zinc-coated metal plate
- Shelves support and bottom shelf in grey colour RAL 7004
- Back doors, sliding, double glazed (in corner and 0600 modules hinged door)
- Lighting – top and each shelf – energy-saving, LEDit, WW-2
- Sidewalls integrated with thermopane glass, with silk-screen painting
- Glass | double, straight | tilt

## Dimensions

Width (mm)	600	900	1400	980	1960
Depth (mm)	800				
Height (mm)	1285				

## Refrigerant

R290

## Connection

Plug-in

## Efficiency

Auto  
evaporation

LED

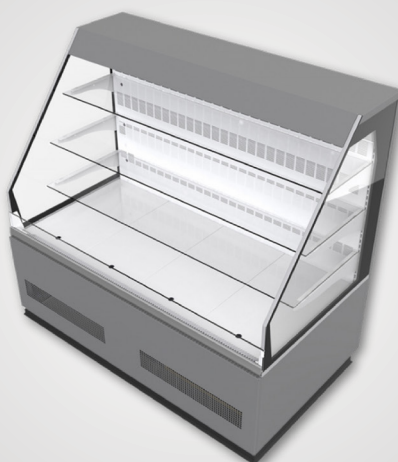
Electrical  
defrost

## Temp Range

2...4°C

C

# RDEL-22



JBG2

A versatile display counter with streamlined design and consistent cooling.

## Standard

- Electronic controller with temperature indicator
- 3 suspended glass shelves + bottom made of powder-coated, zinc-coated metal plate
- Shelves support and bottom shelf in grey colour RAL 7004
- Lighting – top and each shelf – energy-saving, LEDit, WW-2
- Sidewalls integrated with thermopane glass, with silk-screen painting
- Mechanical night blind
- Low glass or front glass riser | single, straight | fixed

## Dimensions

Width (mm)	600	900	1400
Depth (mm)	800		
Height (mm)	1290		

## Refrigerant

R290

## Connection

Plug-in

## Efficiency

Auto  
evaporation

LED

Natural  
defrost

## Temp Range

2...4°C

E



# RDET-21



JBG2

A compact countertop chiller, perfect for tight spaces.

## Standard

- Electronic controller with temperature indicator
- 3 suspended glass shelves + bottom made of powder-coated, zinc-coated metal plate
- Shelves support and bottom shelf in grey colour RAL 7004
- Back doors, sliding, double glazed
- Lighting – top and each shelf – energy-saving, LEDit, WW-2
- Sidewalls integrated glass, with silk-screen painting
- Glass | single, straight | tilt

## Dimensions

Width (mm)	900	1400
Depth (mm)	800	
Height (mm)	1285	

## Refrigerant

R290

## Connection

Plug-in

## Efficiency

Auto  
evaporation

LED

Electrical  
defrost

## Temp Range

2...4°C

C



# Hot Foods

A perfect blend of modern presentation and multifunctional use. These units keep hot foods at ideal serving temperatures while enhancing the overall look and feel of your food service area. Designed for convenience, they support both dry and wet heating options.

## The Range

**Counters    Rotisseries**



## Key Features



R290  
refrigerant for  
chilled modes



LED



Auto-cleaning





**MULTILAYER**

**Counters**



# LGGR-28



JBG2

A heated display counter designed to keep products warm and visible with consistent temperature control.

## Standard

- Electronic controller with temperature indicator / for Bain Marie additionally a mechanical thermometer at the air inlet
- Feature of the heating element – heating plate (for hot case) / heating bath (for Bain Marie)
- Lighting panel: IR heating lamp (for GSL)
- Exposition: stainless steel H18
- External surfaces (front / base): zincplated steel, powder-coated
- Exposition on a full base

## Options

- Sidewalls

## Dimensions

Width (mm)	1250
Depth (mm)	1060
Height (mm)	1235

## Refrigerant

R290

## Connection

Plug-in

## Temp Range

+85°C

# DSL C



Soft-line display cabinets for ambient or chilled merchandise.

## Standard

- 1+1/3 GN depth
- 6 different counter widths
- Top heat with separately adjustable infrared radiators (heated counters only)
- Counter body and superstructure in silver
- Cutting board on the operator side

## Options

- 2 thermal versions
  - Convection with humidification
  - Cold
- Accessories and inserts

## Dimensions

Width (mm)	744	1072	1412	1752	2138	2478
Depth (mm)	1052					
Height (mm)	851					

## Refrigerant

R290 for chilled models

## Connection

Plug-in

## Efficiency

LED

# DCUC



Cube glass display cabinets for ambient or chilled merchandise.

## Standard

- 1+1/3 GN depth
- 6 different counter widths
- Top heat with separately adjustable infrared radiators (heated counters only)
- Counter body and superstructure in silver
- Cutting board on the operator side

## Options

- 4 thermal versions
  - Convection with humidification
  - SmartHeat
  - Thermoflex
  - Cold
- Accessories and inserts

## Dimensions

Width (mm)	744	1072	1412	1752	2138	2478
Depth (mm)	1061					
Height (mm)	773					

## Refrigerant

R290 for chilled models

## Connection

Plug-in

## Efficiency

LED



**MULTILAYER**

**Rotiserries**



# RT Convex



High-throughput electric rotisseries for food service.

## Standard

- Equipment comes with double spits
- 8 spit or basket positions
- Wired core temperature sensor
- Rotating skewers and drip tray
- 3 heating systems – infrared, convection and steam injection
- Convex, frameless panoramic double glazing for insulation and safety
- Wireless Radio Technology

## Options

- Two units of the CONVEX Rotisserie RT608CC can be mounted on top of each other and connected to form a double-tier rotisserie. Gives twice the grilling capacity but on the footprint of one appliance.
- Wireless core temperature probes

## Dimensions

Width (mm)	800	1000
Depth (mm)	789 / 938	
Height (mm)	1065 / 1210 / 2225	
Capacity (Chickens)	30 / 48 / 96	

## Efficiency

Auto  
self-cleaning

Pass-through  
design

Intelligent  
computer  
control

## Temp Range

+180...  
240°C

# RT Topline



High-throughput electric rotisseries for foodservice.

## Standard

- Equipment comes with double spits
- Fully glazed fronts in elegant black design
- Combined heating system of convection and infrared
- Rotating skewers and drip tray
- Tool-free removal of all essential parts

## Options

- 2 versions
  - Electric version
  - Gas version
- Intelligent Computer Control for CC version only: Up to 8 WRT sensors, Wired core temperature sensor, Remaining time display on customer side
- Available alternatively with manual control
- Double glazing on request

## Dimensions

Width (mm)	800	955
Depth (mm)	660 / 821	
Height (mm)	845 / 1012 / 1690 / 2024	
Capacity (Chickens)	15 / 20 / 25 / 30 / 48 / 60 / 96	

## Efficiency

Auto  
self-cleaning

Pass-through  
design

## Temp Range

+180...  
240°C



# Promotion

Stylish and energy-efficient, these units are designed to elevate product visibility and encourage customer interaction. With flexible formats that shift seamlessly from service to self-service, they offer ergonomic access, easy maintenance and smart storage.

Perfect for promotional zones and impulse buys, this range helps you showcase more while keeping products fresh and front of mind.

## The Range

### Plug-ins



## Key Features



R290  
refrigerant



Eco fan



Auto-evaporation



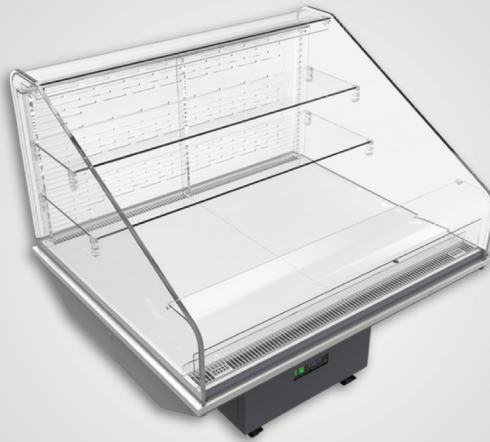


# MULTILAYER

## Plug-ins



# Fiji LDFI-22



JBG2

A plug-in chiller delivering dependable cooling and easy placement flexibility.

## Standard

- Zinc-plated steel, powder coated in white (RAL 9003)
- 2 glass shelves
- Inox square bumper 25 x 25 mm
- Colour of the base black (RAL 9005)
- Sidewalls, back and air flow channels made of perspex
- On wheels
- Low glass or front glass riser | single, bent | fixed

## Dimensions

Width (mm)	1250
Depth (mm)	1100
Height (mm)	1335

## Refrigerant

R290

## Connection

Plug-in

## Efficiency

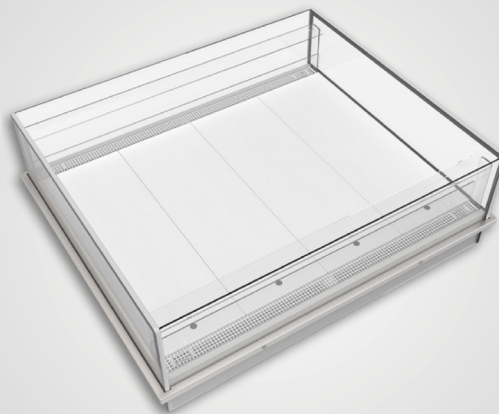
Auto  
evaporationElectrical  
defrost

## Temp Range

2...4°C

D

# Fiji LDFI-25



JBG2

A plug-in chiller delivering dependable cooling and easy placement flexibility.

## Standard

- Electronic controller with temperature indicator
- Zinc-plated steel, powder coated in white (RAL 9003)
- Inox square bumper 25 x 25 mm
- Colour of the base black (RAL 9005)
- Sidewalls of integrated glass with black/grey silk screen painting; single glass without silk screen
- On wheels
- Low glass or front glass riser | single, straight | fixed

## Dimensions

Width (mm)	1000	1250	1600
Depth (mm)	905		
Height (mm)	930		

## Refrigerant

R290

## Connection

Plug-in

## Efficiency

Auto  
evaporationElectrical  
defrost

## Temp Range

2...4°C

D

# Fiji LDFI-28



JBG2

A plug-in chiller delivering dependable cooling and easy placement flexibility.

## Standard

- Electronic controller with temperature indicator
- Zinc-plated steel, powder coated in white (RAL 9003)
- Inox square bumper 25 x 25 mm
- Colour of the base black (RAL 9005)
- Sidewalls glass with black/ grey screen printing
- On wheels
- Low glass or front glass riser | single, straight | fixed

## Options

- LEDit lighting

## Dimensions

Width (mm)	1250	1600
Depth (mm)	1115	
Height (mm)	1130	

## Refrigerant

R290

## Connection

Plug-in

## Efficiency

Auto  
evaporation

ECO fan

Electrical  
defrost

## Temp Range

2...4°C

C



# Fiji LDFI-29



JBG2

A plug-in chiller delivering dependable cooling and easy placement flexibility.

## Standard

- Electronic controller with temperature indicator
- Zinc-plated steel, powder coated in white (RAL 9003)
- Inox square bumper 25 x 25 mm
- Colour of the base black (RAL 9005)
- Sidewalls glass with black/ grey screen printing
- On wheels
- Open: low glass or front glass riser | single, straight | fixed

## Options

- LEDit lighting

## Dimensions

Width (mm)	1250	1600
Depth (mm)	1110	
Height (mm)	1335	

## Refrigerant

R290

## Connection

Plug-in

## Efficiency

Auto  
evaporation

ECO fan

Electrical  
defrost

## Temp Range

2...4°C

C

# IDA S



freor

Compact plug-in multi-use cabinet for versatile display.

## Standard

- Multiplexible
- Stainless steel bumper
- Tempered glass
- Panoramic endwalls
- Protection against glass fogging
- Evaporating bath
- On wheels with blocking kits
- Temperature sensor

## Options

- Display deck and lower showcase part – stainless steel or any color according to RAL palette
- Canopy LED lighting
- Sliding glass covers

## Dimensions

Width (mm)	1200
Depth (mm)	770
Height (mm)	955

## Refrigerant

R290

## Connection

Plug-in

## Efficiency

LED

ECO fan

## Temp Range

1...  
10°C

-1...  
7°C

-1...  
5°C

C



# MULTILAYER

Cooler. Fresher. Faster.

